

# Bear Lake Shoppes

## Retail Space for Lease



3840 E. State Road 436  
Apopka, Florida 32703

### Property Details:

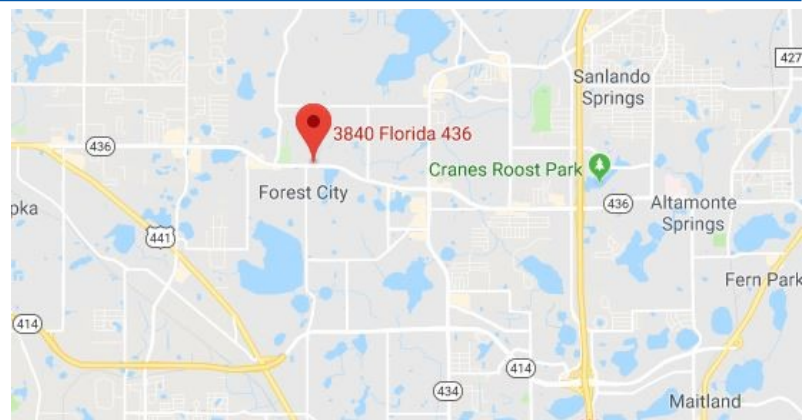
Total Space Available	5,280 SF
Rental Rate	TBD
Min. Divisible	1,320 SF
Max. Contiguous	2,640 SF
Property Type	Retail
Property Sub-type	Strip Center
Zoned	PUD
Year Built	1985

### Spaces:

Suite	Space Available	Min Divisible	Max Contiguous	Price	Date Available	Description
1030	1,320 - 2,640 SF	1,320 SF	2,640 SF	TBD	Now	Prior dance studio
1066	1,320 - 2,640 SF	1,320 SF	2,640 SF	TBD	Now	Prior hair salon/ spa

### Location Description:

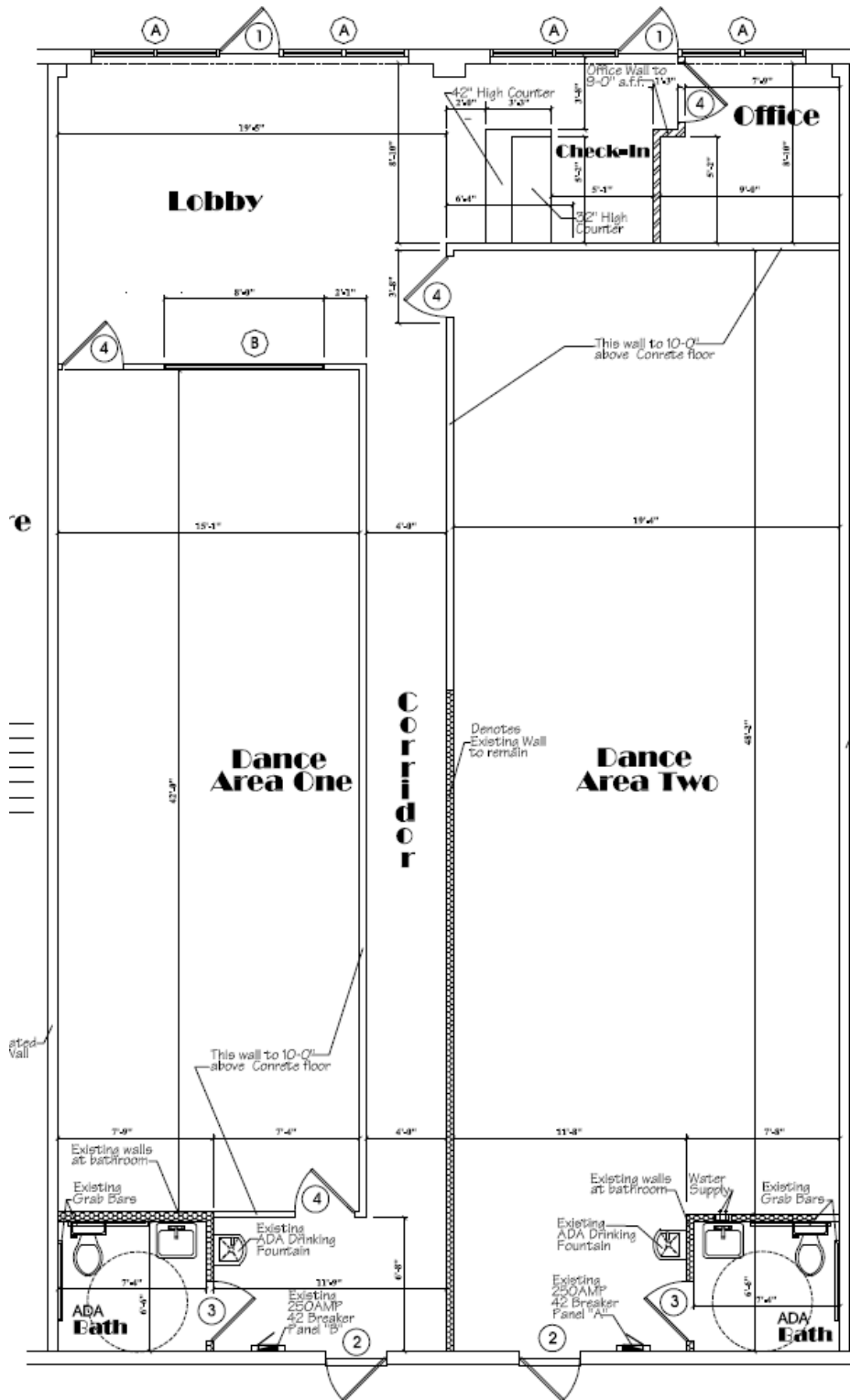
- High Traffic 61,000 AADT
- Daytime population of over 80,000 within a 3 mile radius
- National co-tenants include Starbucks Coffee, Carespot, and The Original Mattress Factory



Commercial Sales & Leasing | Property Management | Project Development | Acquisitions & Dispositions | Construction Services

Southeastern Realty Group, Inc. - 933 Lee Road Suite 400 - Orlando, FL 32810 - t: 407-629-5595 - f: 407-645-2035

# Floorplan - Suite 1030:



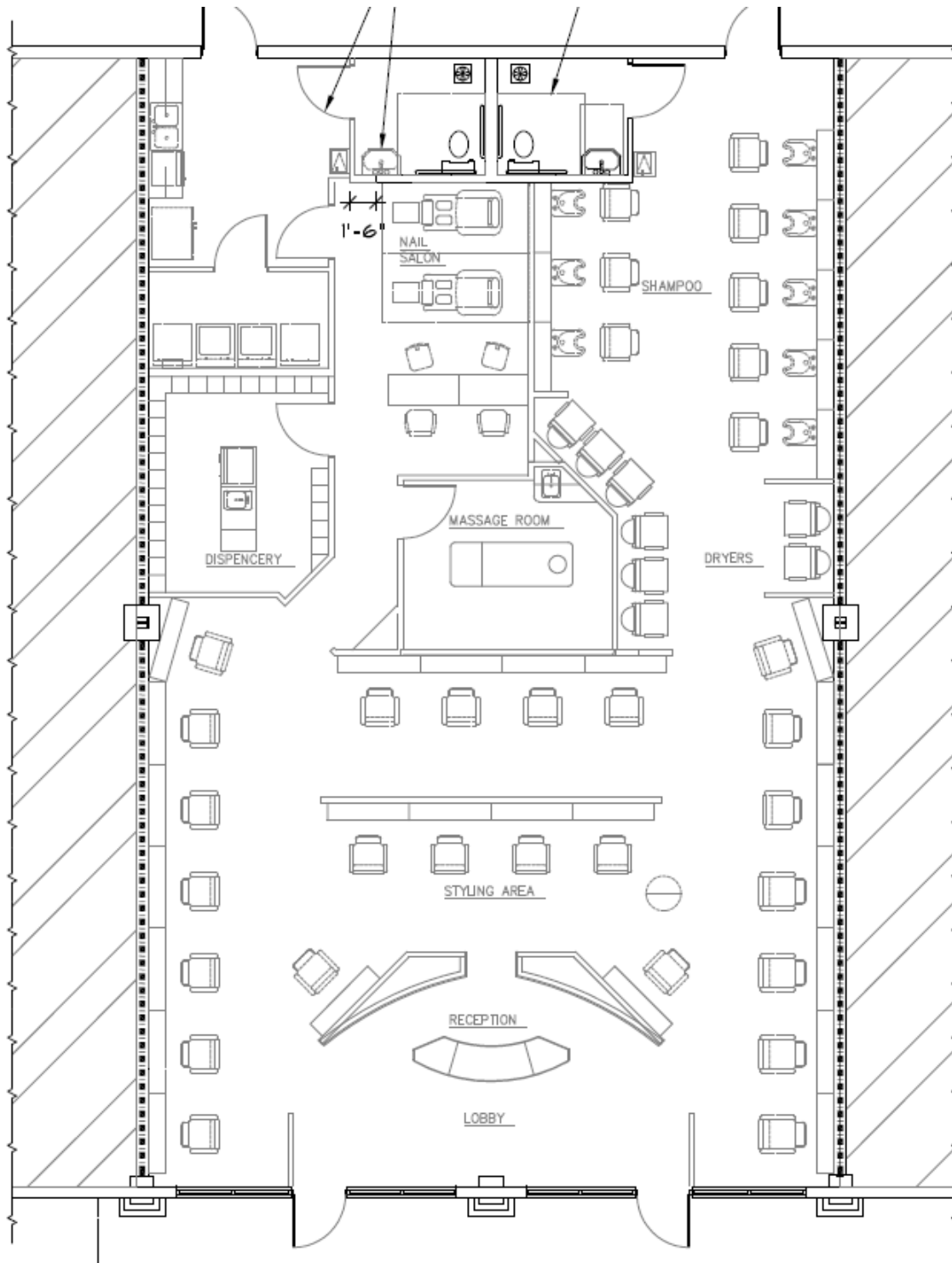
1,320 - 2,640 sf  
 Note: Space can be divided.

Commercial Sales & Leasing | Property Management | Project Development | Acquisitions & Dispositions | Construction Services

Southeastern Realty Group, Inc. - 933 Lee Road Suite 400 - Orlando, FL 32810 - t: 407-629-5595 - f: 407-645-2035

The information contained herein is from sources deemed reliable, but no warranty or representation is made as to the accuracy thereof and no liability may be imposed.

# Floorplan - Suite 1066:



1,320 - 2,640 sf  
Note: Space can be divided.

Commercial Sales & Leasing | Property Management | Project Development | Acquisitions & Dispositions | Construction Services

Southeastern Realty Group, Inc. - 933 Lee Road Suite 400 - Orlando, FL 32810 - t: 407-629-5595 - f: 407-645-2035

The information contained herein is from sources deemed reliable, but no warranty or representation is made as to the accuracy thereof and no liability may be imposed.



# Exterior Photos:



Commercial Sales & Leasing | Property Management | Project Development | Acquisitions & Dispositions | Construction Services

Southeastern Realty Group, Inc. - 933 Lee Road Suite 400 - Orlando, FL 32810 - t: 407-629-5595 - f: 407-645-2035

The information contained herein is from sources deemed reliable, but no warranty or representation is made as to the accuracy thereof and no liability may be imposed.